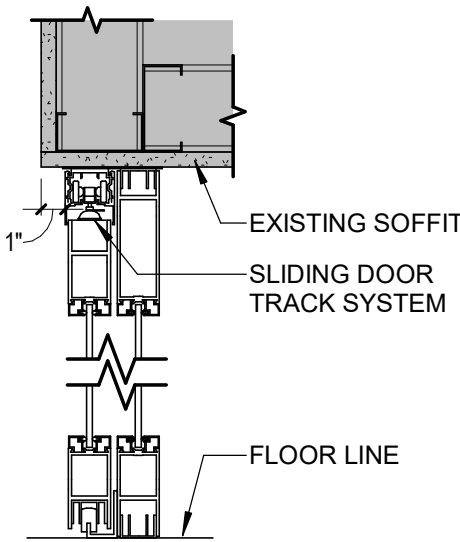




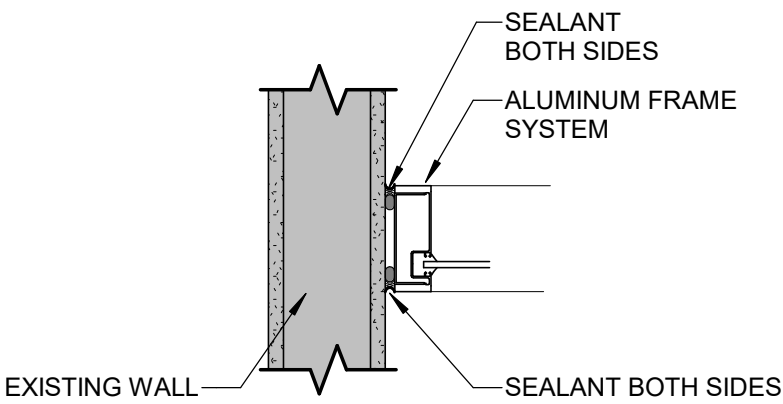
312 Plum Street, Suite 700, Cincinnati, OH 45202
PHONE: (513) 381-2112 FAX: (513) 381-5121



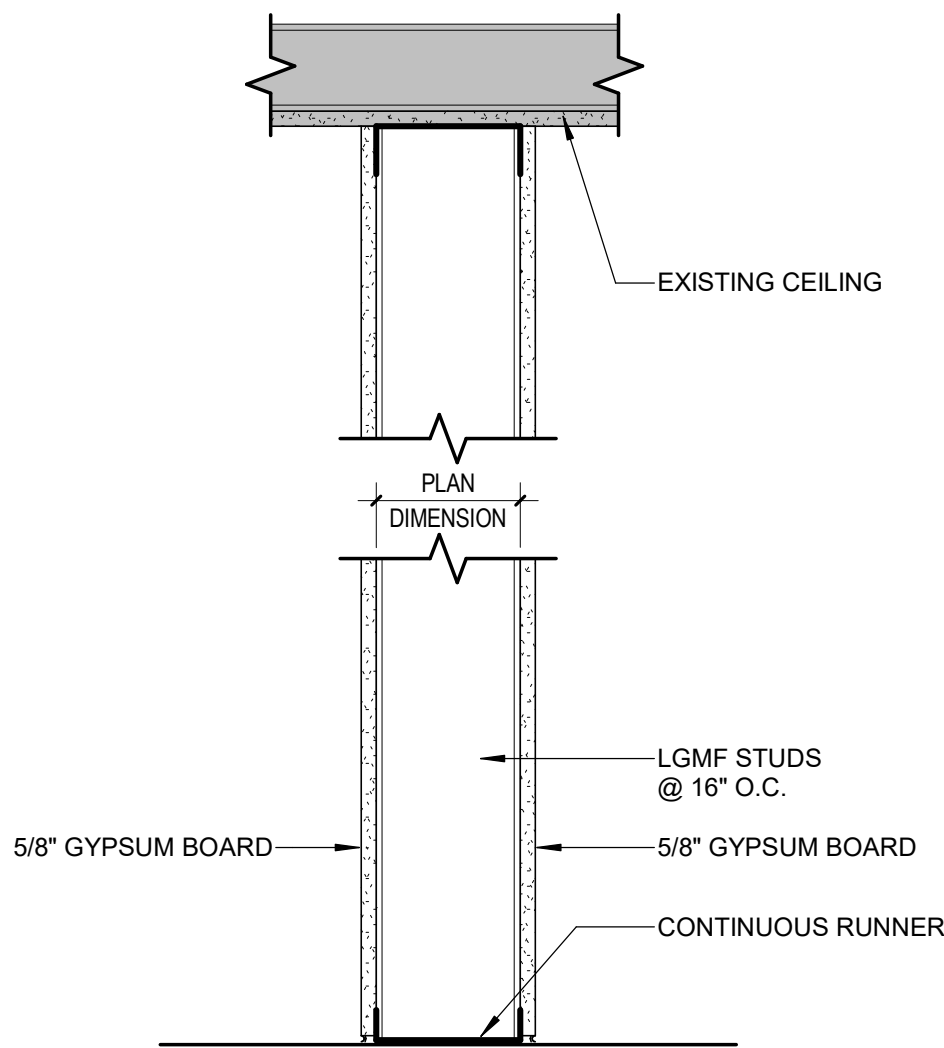
DOOR AND FRAME SCHEDULE																				
DOOR									FRAME											
#	# OF LEAFS	WIDTH	HEIGHT	THK	TYPE	MATL	FINISH	GLASS	DEPTH	TYPE	E-FRAME	MATL	FINISH	HEAD	JAMB	SILL	ACCESS CONTROL	HDWR SET	NOTES	DOOR #
1003	1	4'-0"	8'-3 1/4"	1 3/4"	FG	AL	PF		4 1/2"		-	AL	PF	H1	J1		-	1		1003
1003	1	4'-0"	8'-3 1/4"	1 3/4"	FG	AL	PF		4 1/2"		-	AL	PF	H1	J1		-	1		1003



H1

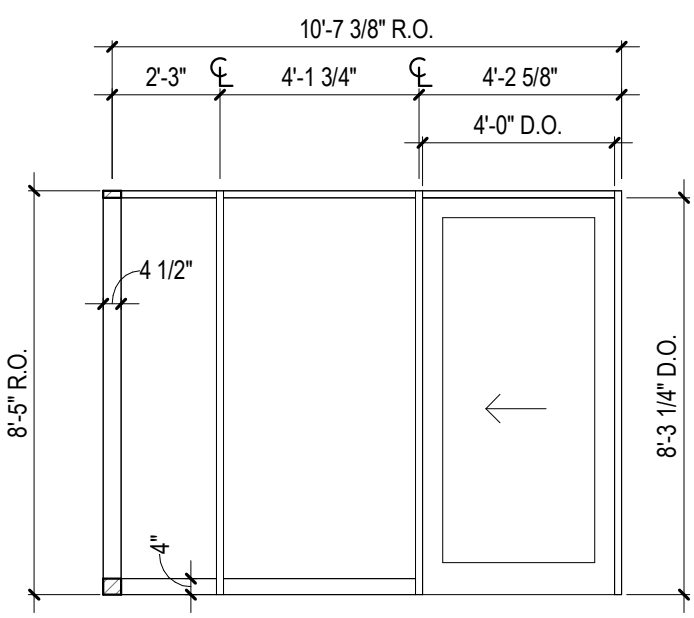


J1

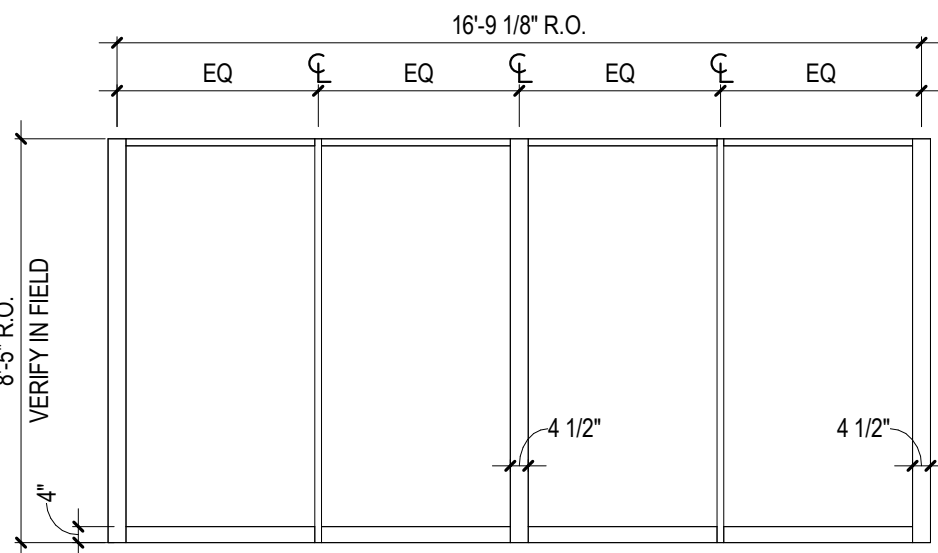


S1 3-5/8" LGMF

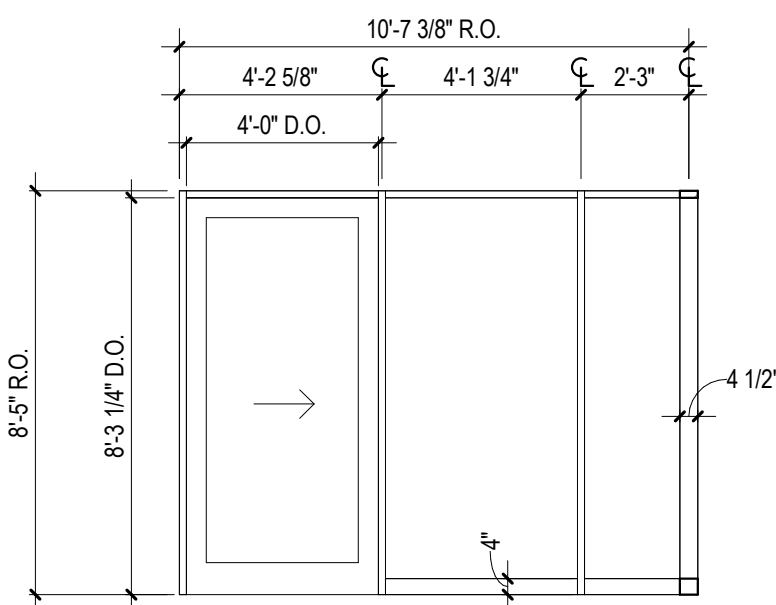
PARTITION TYPES



S1
FRAMING MEMBERS:
1 3/4" x 4 1/2"
GLAZING TYPE UNO:
G-1



S2
FRAMING MEMBERS:
1 3/4" x 4 1/2"
GLAZING TYPE UNO:
G-1



S3
FRAMING MEMBERS:
1 3/4" x 4 1/2"
GLAZING TYPE UNO:
G-1

STOREFRONT TYPES

BASIS OF DESIGN: FRAMEWORKS TYPE I FRAME SYSTEM WITH FIXED PANEL/ SLIDER DOORS (OR EQUAL)

COLOR: BLACK

HARDWARE SET 1- PASSAGE

- FIXED PANEL SLIDING DOOR TRACK WITH SNAP ON COVER
- (1) DOOR GUIDE
- (2) DOOR STOPS
- (2) 16" CYLINDRICAL DOOR HANDLE SET

NOTES:

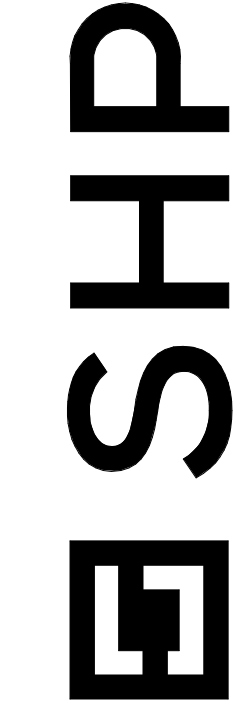
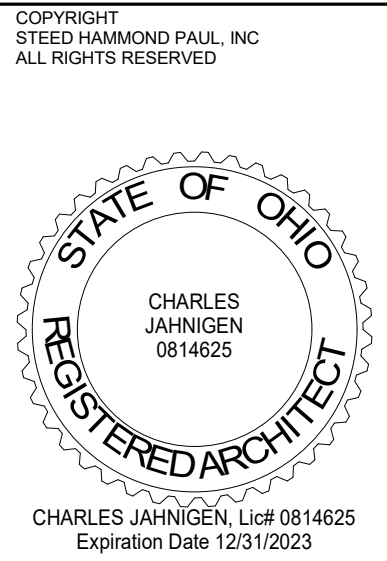
- HARDWARE BASES OF DESIGN: MOCKETT DH4BB
- FINISH FOR ALL HARDWARE TO BE BLACK, UNLESS OTHERWISE NOTED

ADDITIONAL REQUIREMENTS:

- ALL DOORS IN THE MEANS OF EGRESS SHALL BE READILY OPENABLE FROM THE EGRESS SIDE WITHOUT THE USE OF A KEY OR SPECIAL KNOWLEDGE OR EFFORT.
- ALL DOOR HARDWARE SHALL MEET THE REQUIREMENTS OF THE AMERICANS WITH DISABILITIES ACT (ADA).
- DOORS OPENING INTO AND EXIT CORRIDOR SHALL BE SELF-CLOSING AND HAVE A MINIMUM FIRE RESISTANCE, RATING OF 90 MINUTES. DO NOT INSTALL HOLD OPEN KICK DOWNS @ DOOR OPENING INTO EXIT CORRIDORS.
- DOOR CLOSERS SHALL BE ADJUSTED SO THAT FROM AND OPEN POSITION OF 90 DEGREES, THE TIME REQUIRED TO MOVE THE DOOR TO A POSITION OF 12 DEGREES FROM THE LATCH IS 5 SECONDS MINIMUM
- DOOR SPRING HINGES SHALL BE ADJUSTED SO THAT FROM THE OPEN POSITION OF 70 DEGREES, THE DOOR SHALL MOVE TO THE CLOSED POSITION IN 1.5 SECONDS MINIMUM
- THRESHOLDS SHALL NOT EXCEED 1/2" IN HEIGHT. RAISED THRESHOLDS AND FLOOR LEVEL CHANGES AT ACCESSIBLE DOORWAYS SHALL BE BEVELED WITH A SLOPE NOT GREATER THAN 1:2
- ALL LEGAL EXITS SHALL BE PROVIDED WITH SELF-ILLUMINATED EXIT SIGNS HAVING 6" LETTERS WITH 3/4" STROKES IN CONTRASTING COLOR
- HARDWARE CONTRACTOR TO COORDINATE ALL HARDWARE WITH DOORS AND FRAMES AS SPECIFIED, INCLUDING BACKSETS AND STRIKES
- ALL COMPONENTS OF FIRE RATED DOOR ASSEMBLIES SHALL BEAR THE LABEL OF AN APPROVED TESTING AGENCY INCLUDING: DOOR, FRAME, CLOSING DEVICE, LATCHES AND HINGES. PROVIDE SMOKE GASKETS AND DRAFT CONTROL IF REQUIRED.
- HARDWARE FOR ALL ACCESSIBLE DOORS SHALL BE OF THE LEVER OR PUSH TYP. MOUNTED 30" TO 44" AFF
- GC TO MAXIMIZE POSSIBLE DOOR SWING AT ALL DOORS
- PROVIDE WALL OR FLOOR MOUNTED DOOR STOPS AT ALL DOORS
- ALL DOOR HARDWARE TO BE BRUSHED STAINLESS FINISH, UNLESS OTHERWISE NOTED
- DOORS WITH PASSAGE FUNCTION HARDWARE DO NOT HAVE LOCKING HARDWARE. EGRESS DOORS TO ROOMS SERVING FIRE ESCAPES SHALL NOT HAVE LOCKING HARDWARE

OPENING SCHEDULE ABBREVIATIONS

AL	ALUMINUM
HM	HOLLOW METAL
PF	PREFINISHED
PT	PAINT
SS	STAINLESS STEEL
STL	STEEL
WD	WOOD



312 Plum St., Ste 700
Cincinnati, OH 45202
513.350.1112

1066 North 4th St., Ste 111
Columbus, OH 43201
614.222.2124

223 Fairfield Ave., Ste 100
Bellevue, KY 41003
857.300.1234

WILLIAMSBURG HIGH SCHOOL
MEDIA CENTER RENOVATION
500 SOUTH 5TH STREET, WILLIAMSBURG, OHIO 45176
WILLIAMSBURG LOCAL SCHOOL DISTRICT
549A WEST MAIN STREET, WILLIAMSBURG, OHIO 45176

ISSUANCES

05-19-23 / PERMIT & BID SET

OPENING SCHEDULE

COMM NO. 2023044.01

A010





FIRST FLOOR PLAN - MEDIA CENTER
 1/8" = 1'-0"



- A. REPAIR EXISTING SURFACES WHERE DEMOLITION HAS OCCURRED FOR NEW CONSTRUCTION. GENERAL TRADES CONTRACTOR SHALL REMOVE ALL EXISTING MATERIALS AND FINISHES TO BE REMOVED BY DEMOLITION WORK. PATCHING/CUTTING OF EXISTING SURFACES FOR NEW WORK SHALL BE DONE BY GENERAL TRADES CONTRACTOR PERFORMING THE WORK. ALL REPAIRS SHALL MATCH EXISTING ADJACENT SURFACES IN MATERIAL, FINISH, TEXTURE, ETC. EXISTING SURFACES ARE TO BE REPAIRED IN BIG AND IS NOT TO BE INCLUDED IN THE QUANTITY ALLOWANCE.
- B. UNLESS DIRECTED BY OWNER, ALL MISCELLANEOUS ITEMS ATTACHED TO OR ON SURFACES TO BE REMOVED SHALL BE REMOVED BY THE CONTRACTOR TO BE REMOVED. THIS INCLUDES BUT IS NOT LIMITED TO: SIGNAGE, LIGHT FIXTURES, TELEPHONE, CABLE, OTHER DISPLAYS, PROJECTION SCREENS, AND VISUAL DISPLAY BOARDS. OWNER WILL REMOVE ALL LOOSE FURNITURE/APPLIANCES IN ROOMS TO BE REMOVED FOR CONSTRUCTION.
- C. AT ALL EXISTING SURFACES SCHEDULED TO RECEIVE A NEW PAINT FINISH REMOVE ANY EXISTING FASTENERS, BRACKETS, ETC. IN WALLS AND CEILING AND DO NOT PATCH. PATCH ALL CRACKS AND CHIPPED SURFACES IN MATERIALS, FINISH, TEXTURE, ETC. PATCH CHIPPED PATCH SURFACES ON PLASTER WALLS TO MATCH ADJACENT SURFACES. TEXTURE, SAND GRITTED EDGES ON WOOD AND PLASTER SURFACES SMOOTH.
- E. NOT ALL ROOM MATERIALS TO BE REMOVED INDICATED. REMOVE MATERIALS FINISH IS INDICATED IN ROOM FINISH SCHEDULE. REMOVE EXISTING MATERIALS/FINISH INCLUDING FLOOR AND BASE. DEMOLITION CONTRACTOR TO REMOVE ALL MATERIALS, PARTITIONS, AND FLOOR PAINT WHETHER OR NOT SHOWN TO BE REMOVED ON DEMOLITION FLOOR PLANS.
- F. UNLESS DIRECTED BY OWNER, MECHANICAL AND ELECTRICAL DRAWINGS FOR ADDITIONAL ITEMS TO BE DEMOLISHED.

KEY NOTES - DEMOLITION PLANS

- | | |
|----|--|
| D1 | REMOVE EXISTING FLOOR FINISH AND WALL BASE |
| D2 | REMOVE EXISTING CASEWORK |

GENERAL NOTES - FLOOR PLAN

- A. ALL DIMENSIONS ARE TO FACE OF MASONRY, FACE OF STUD, OR FACE OF EXISTING FINISH UNLESS NOTED OTHERWISE.
- B. ALL PARTITIONS TYPE M1 UNLESS NOTED OTHERWISE.

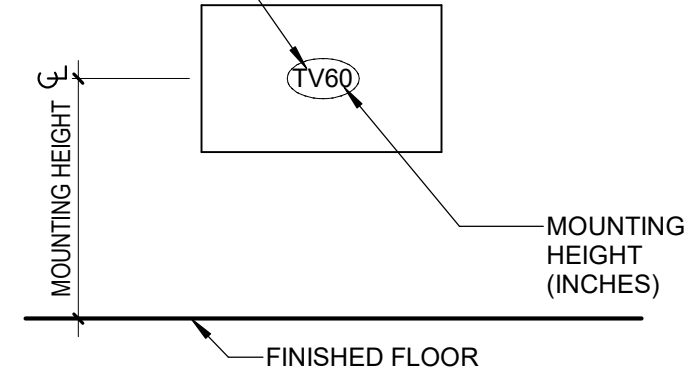
KEY NOTES - FLOOR PLANS

- A1 WALL MOUNTED TVS ABOVE CUT PLANE. SEE ELEVATION 4/A600
- A2 REUSE EXISTING TV BRACKET
- A3 STOREFRONT TO ALIGN WITH EXISTING SOFFIT ABOVE. HOLD FACE OF STOREFRONT MULLION 1" +/- FROM FACE OF SOFFIT FACE.

TV MOUNTING HEIGHT LEGEND

NTS

WALL MOUNTED TELEVISION (TV) /
WALL MOUNTED TELEVISION,
VERTICAL ORIENTATION (VTV) —



KEY PLAN

NTS



SHF

319 Plum St., Ste. 700 Cincinnati, OH 45202 513.381.2112	1086 North 4th St., Ste. 111 Cincinnati, OH 45201 616.232.2124	223 Fairfield Ave., Ste. 100 Boulder, CO 80501 859.360.1294
--	--	---

WILLIAMSBURG HIGH SCHOOL
MEDIA CENTER RENOVATION
500 SOUTH 5TH STREET, WILLIAMSBURG, OHIO 45176

WILLIAMSBURG LOCAL SCHOOL DISTRICT
549A WEST MAIN STREET, WILLIAMSBURG, OHIO 45176

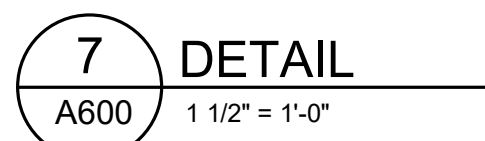
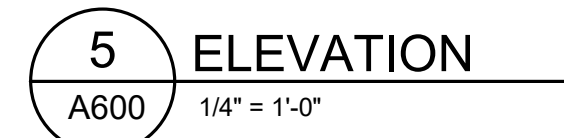
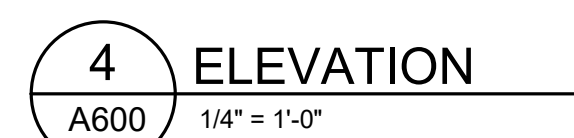
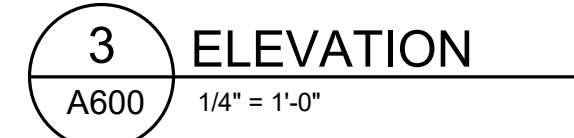
ISSUANCES

05-19-23	PERMIT & BID SET
----------	------------------

**MEDIA CENTER
DEMO PLAN,
FLOOR PLAN &
REFLECTED
CEILING PLAN**

COMM NO. 2023044.01

A100A



A. SHAW CONTRACT; ENDLESS TILE; COLOR: SKIES 05486
B. J+J FLOORING; COLOR ZONE 7479; COLOR: 3370 COBALT
C. MOHAWK GROUP; COLOR BALANCE GT405; COLOR: 565 FLAME

C:\Users\tpoff\Documents\L\Fk623MEP 2023044.01-Williamsburg LSD-Media Center Reno_ipofZMBZH.rvt

5/17/2023 7:49:07 AM

23-AIR DEVICE SCHEDULE												
MARK	BASIS OF DESIGN		DIFFUSER TYPE	MAXIMUM AIRFLOW	MAXIMUM PRESSURE DROP	MAXIMUM SOUND	BLADE SPACING	DIFFUSER PATTERN	CONNECTION SIZE (INCH)	FACE SIZE (INCH)	NOTES	
	MANUFACTURER	MODEL										
ECG-1	PRICE	80	EGG CRATE GRILLE	720 CFM	0.085 in-wg	20	1/2" X 1/2"	0	12" X 12"	12" X 12"	1	
SOT-2	PRICE	VPD-HC	VARITHERM MECHANICAL VAV DIFFUSER	210 CFM	0.110 in-wg	17	N/A	0	80	24x24	1, 2	

- HARD-SURFACE MOUNTING.
- VAV DIFFUSER WITH SETPOINTS ACCESSIBLE THROUGH FACE OF DIFFUSER WITH ADJUSTABLE MINIMUM AIRFLOW SETPOINT SET TO 65 CFM.

ASHRAE Standard 62.1-2016

By SHP

System Ventilation Requirements

AHU Location	Description	∑ Vpz cfm	Ps People	∑ Pz People	D Ps / ∑ Pz	Vou cfm	Vps cfm	Xs	Ev	Vot cfm	%OA Vot / Vps
Alternative 1											
System	FPVAV	Cooling	144	8	8	1.00	51	144	0.353	1,000	51 35.3
		Heating	63	8	8	1.00	51	63	0.800	1,000	51 80.0

* Apply Single Zone Ventilation Calculation

Ventilation Parameters

System Zone Room	Occupancy Category	Rp cfm / p	Pz People	Ra cfm/ft ²	Az ft ²	Vbz cfm	Std 170 Min OA ach	—Cooling— Ez	—Heating— Ez	Voz cfm
Alternative 1										
1002 Small Group Room	Conference/ meeting	5.00	8.00	0.06	178	51	1.00	51	0.80	63
		5.00	8.00	0.06	178	51		51		63

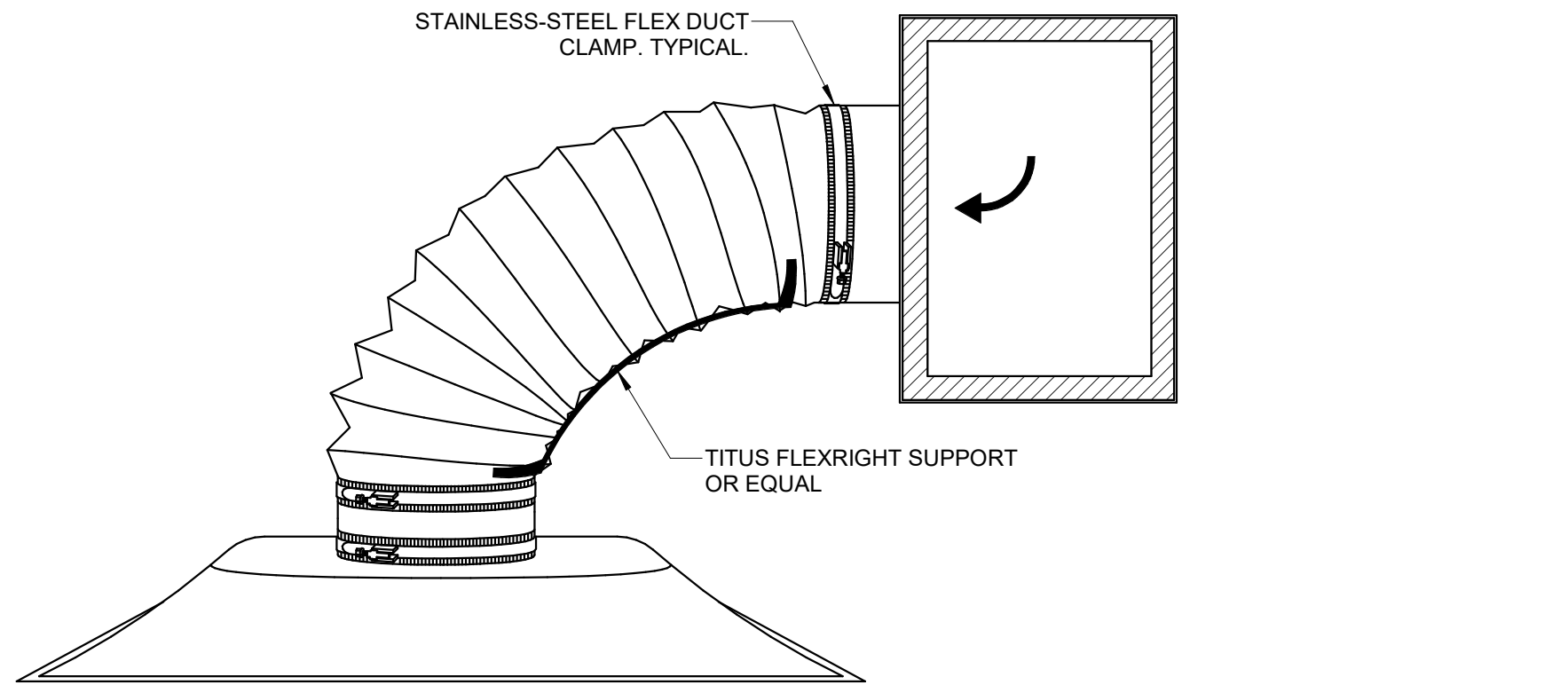
Ventilation Calculations for Cooling Design

System Zone Room	Box Type	Vpz cfm	Vfan cfm	Vdz cfm	Vpz-min cfm	Voz-rlg cfm	Zd	Ep	Er	Fa	Fb	Fc	Evz
Alternative 1													
1002 Small Group Room	SFP Reheat	144	144	144	63	51	0.353	1.00	0.30	1.00	1.00	1,000 *	1,000 *
		144	144	144	63	51							1,000 *

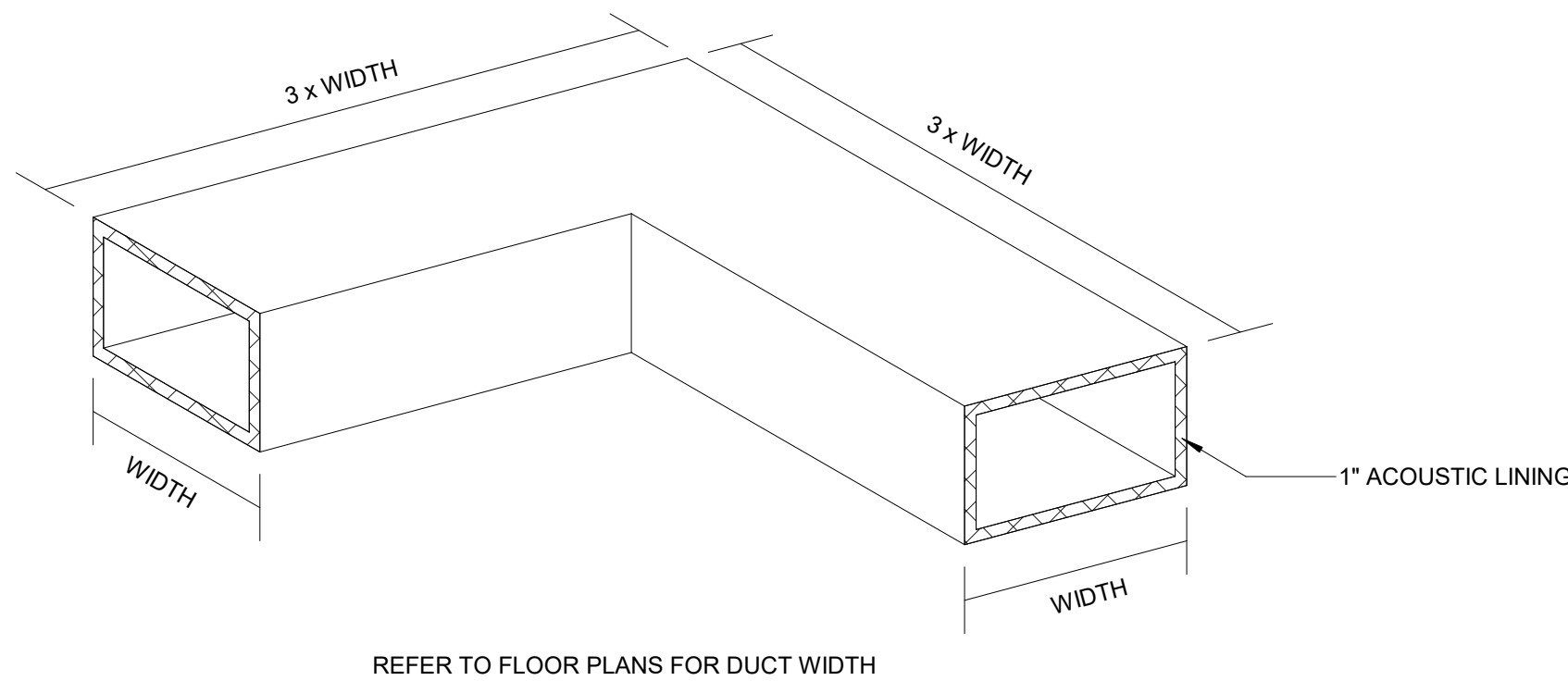
Ventilation Calculations for Heating Design

System Zone Room	Box Type	Vpz cfm	Vfan cfm	Vdz cfm	Vpz-min cfm	Voz-htg cfm	Zd	Ep	Er	Fa	Fb	Fc	Evz
Alternative 1													
1002 Small Group Room	SFP Reheat	63	63	144	63	63	0.441	1.00	0.30	1.00	1.00	1,000 *	1,000 *
		63	63	144	63	63							1,000 *

Project Name: TRACER 700 v6.3.5 calculated at 04:25 PM on 05/12/2023
Dataset Name: 2023044 Williamsburg Irc Alternative - 1 ASHRAE Standard 62.1-2004/2007 Report Page 1 of 1



4 FLEX TO DIFFUSER DETAIL



3 TRANSFER DUCT - ACOUSTIC LINED ELBOW

GENERAL HVAC DEMOLITION NOTES:

- DRAWING IS BASED ON FIELD OBSERVATIONS AND EXISTING DRAWINGS. NOTIFY CM OF DISCREPANCIES DUE TO ACTUAL FIELD CONDITIONS BEFORE PROCEEDING.
- DUCTWORK, PIPING, ACCESSORIES, EQUIPMENT, AND ALL OTHER HVAC SCOPE DENOTED BY BOLD, DASHED LINE TYPE INDICATES DEMOLITION SCOPE.
- DUCTWORK, PIPING, ACCESSORIES, EQUIPMENT, AND ALL OTHER HVAC SCOPE DENOTED BY GRAY LINE TYPE INDICATES DEMOLITION SCOPE.

GENERAL DUCT PLAN NOTES:

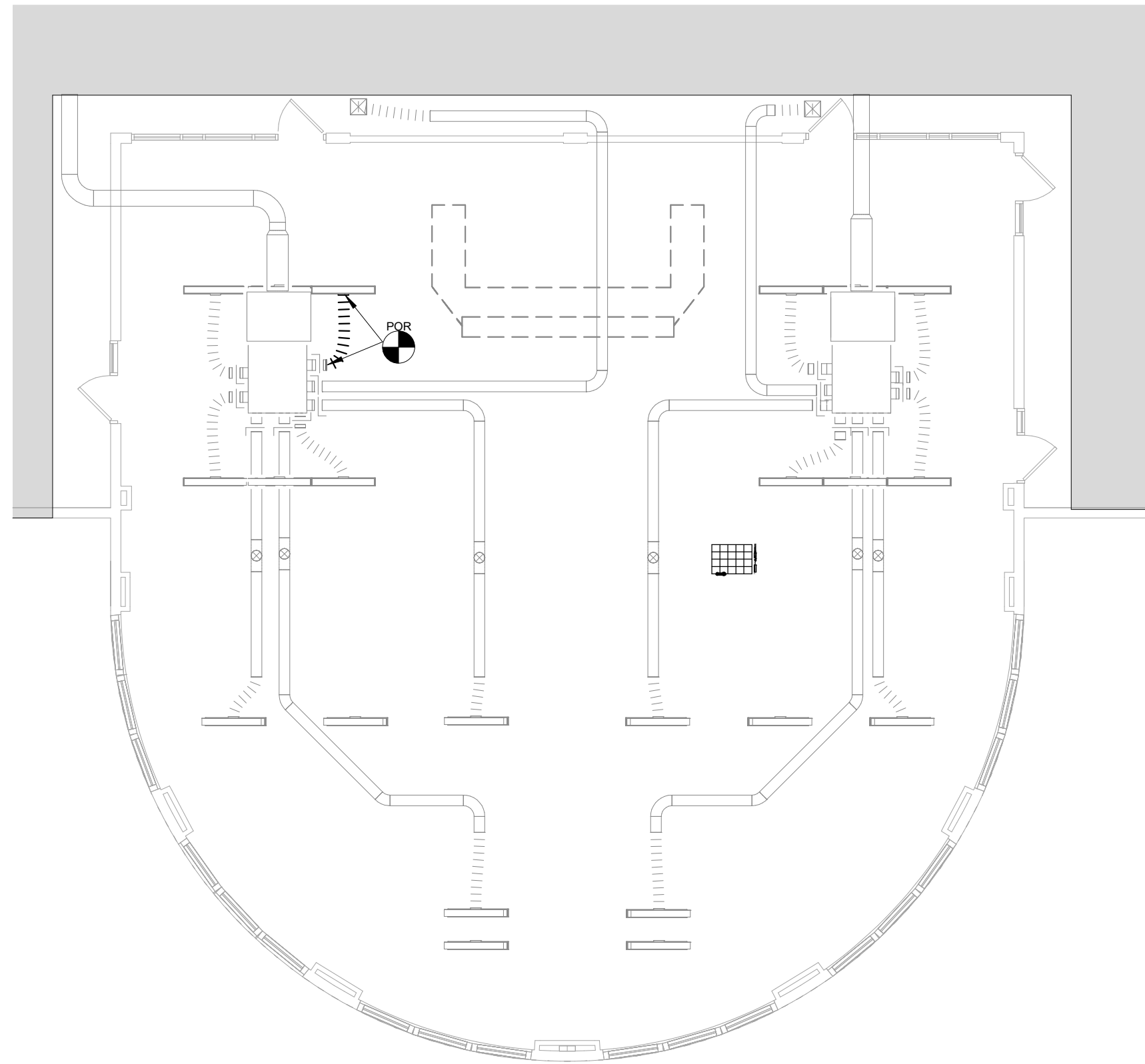
- DUCTS SERVING DIFFUSERS AND GRILLES ARE TO BE THE SAME SIZE AS DIFFUSER NECK SIZE OR GRILLE FACE UNLESS NOTED OTHERWISE.
- AIR TRANSFER DUCTS ARE 14" X 14" UNLESS NOTED OTHERWISE. CONTRACTOR TO PROVIDE ADDITIONAL TRANSFER OPENINGS ABOVE CEILING AS NEEDED FOR AIR RETURN.
- DO NOT ROUTE DUCTWORK OVER ELECTRICAL EQUIPMENT.
- PROVIDE VOLUME CONTROL DAMPERS IN RUN-OUT DUCT TO ALL SUPPLY AIR DEVICES.

KEYNOTES

- ABANDON LINEAR DIFFUSER IN PLACE.
- TOTAL AIRFLOW AT BOX REMAINS UNCHANGED.

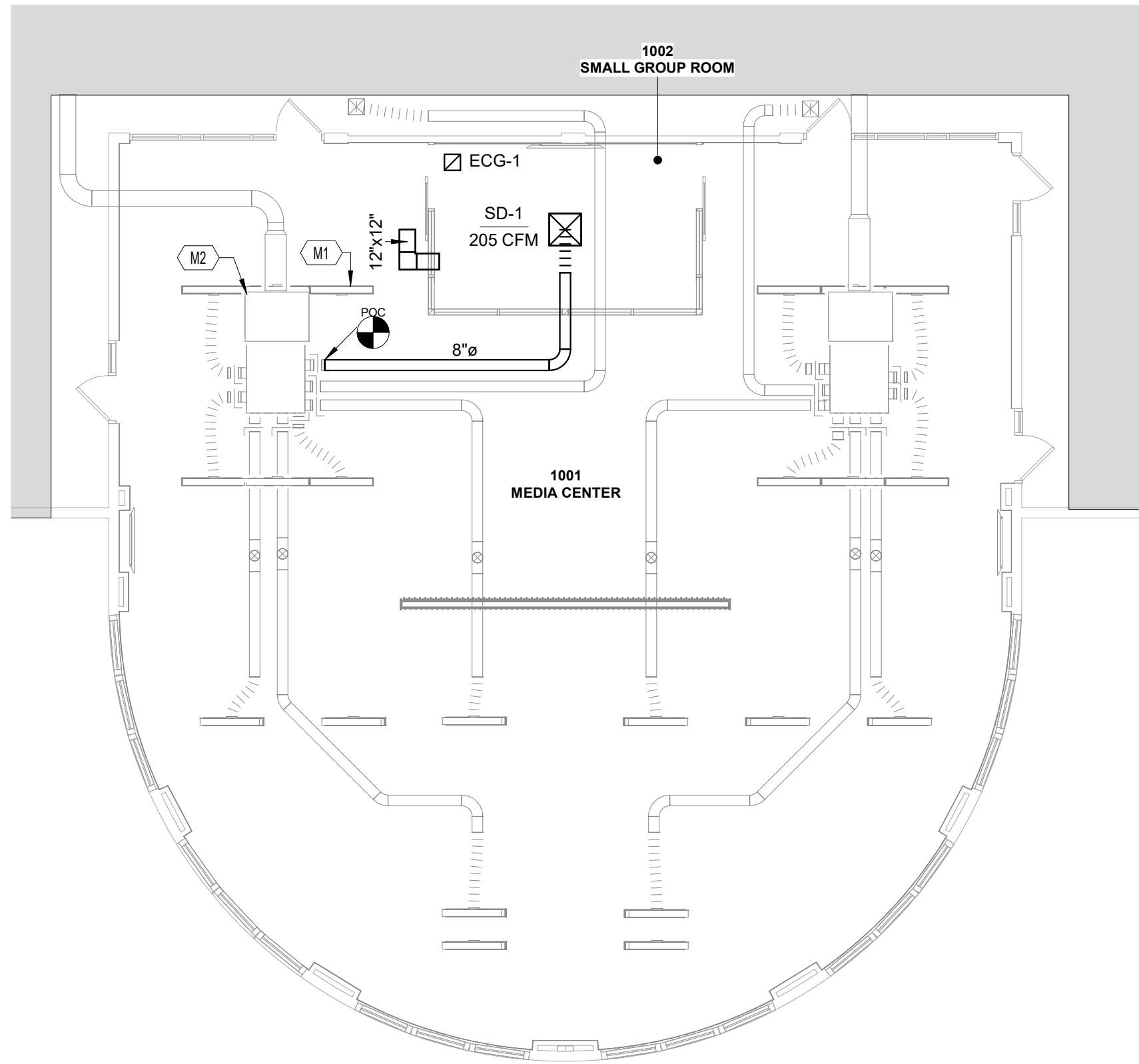
KEY PLAN

N
NTS



2 HVAC DEMOLITION PLAN

M000
1/8" = 1'-0"



1 HVAC PLAN

M000
1/8" = 1'-0"

ABBREVIATIONS

ACU	AIR CONDITIONING UNIT	LL	LOW LIMIT
ACH	AIR CHANGES PER HOUR	LON	LOCAL OPERATING NETWORK
AFUE	ANNUAL FUEL EFFICIENCY RATIO	LP	LOW PRESSURE
AHU	AIR HANDLING UNIT	LRA	LOCKED ROTOR AMPS
AI	ANALOG INPUT	LWBT	LEAVING WET BULB TEMPERATURE
AO	ANALOG OUTPUT	LWT	LEAVING WATER TEMPERATURE
B	BOILER	M&V	MEASUREMENT AND VERIFICATION
BACNET	COMMUNICATION PROTOCOL FOR BUILDING AUTOMATION NETWORKS	MA	MIXED AIR
BAS	BUILDING AUTOMATION SYSTEM	MAT	MATCHED AIR TEMPERATURE
BI	BINARY INPUT	MCC	MOTOR CONTROL CENTER
BO	BINARY OUTPUT	MUA	MAKE-UP AIR UNIT
BTU	BRITISH THERMAL UNIT	MZ	MULTI-ZONE
BTUH	BRITISH THERMAL UNITS / HOUR	NC	NORMALLY CLOSED
CAV	CONSTANT AIR VOLUME	NEMA	NATIONAL ELECTRICAL MANUFACTURERS ASSOCIATION
CDD	COOLING DEGREE DAYS	NO	NORMALLY OPEN
CFC	CHLOROFLUOROCARBON	NPSH	NET POSITIVE SUCTION HEAD
CFM	CUBIC FEET PER MINUTE	OA	OUTSIDE AIR
CH	CHILLER	OAP	OUTSIDE AIR PERCENTAGE
CHW	CHILLED WATER	OAT	OUTSIDE AIR TEMPERATURE
CHWP	CHILLED WATER PUMP	ODP	OPEN DRIP PROOF
CHWR	CHILLED WATER RETURN	OVS	OPERATOR WORK STATION
CHWRT	CHILLED WATER RETURN TEMPERATURE	PC	PERFORMANCE CONTRACTING
CHWS	CHILLED WATER SUPPLY	PE	PROFESSIONAL ENGINEER
CHWST	CHILLED WATER SUPPLY TEMPERATURE	PH	PRE-HEAT
COP	COEFFICIENT OF PERFORMANCE	PID	PROPORTIONAL INTEGRAL DERIVATIVE
CRAC	COMPUTER ROOM AIR CONDITIONER	PRV	PRESSURE RELIEF VALVE
CT	COOLING TOWER	PRV	PRESSURE REDUCING VALVE
CV	CONSTANT VOLUME	PTAC	PACKAGED TERMINAL AIR CONDITIONER
CWP	CONDENSER WATER PUMP	RA	RETURN AIR
CWR	CONDENSER WATER RETURN	RF	RETURN FAN
CWRT	CONDENSER WATER RETURN TEMPERATURE	RH	REHEAT
CWS	CONDENSER WATER SUPPLY	RH	RELATIVE HUMIDITY
CWST	CONDENSER WATER SUPPLY TEMPERATURE	RPM	REVOLUTIONS PER MINUTE
DA	DISCHARGE AIR	RTD	RESISTANCE TEMPERATURE DETECTOR
DB	DRY BULB	RTU	ROOF TOP UNIT
DCV	DEMAND CONTROLLED VENTILATION	SA	SUPPLY AIR
DDC	DIRECT DIGITAL CONTROL	SAT	SUPPLY AIR TEMPERATURE
DH	DUCT HEATER	SEER	SEASONAL ENERGY EFFICIENCY RATIO
DP	DIFFERENTIAL PRESSURE	SF	SUPPLY FAN
DX	DIRECT EXPANSION	SHR	SENSIBLE HEAT RATIO
EAT	ENTERING AIR TEMPERATURE	SP	SET POINT
ECM	ELECTRONICALLY COMMUTATED MOTOR	SP	STATIC PRESSURE
EDH	ELECTRIC DUCT HEATER	T	THERMOSTAT
EER	ENERGY EFFICIENCY RATIO	TEV	THERMOSTATIC EXPANSION VALVE
EF	EXHAUST FAN	TOO	TIME OF DAY
EH	ELECTRIC HEATER	TXV	THERMOSTATIC EXPANSION VALVE
EMS	ENERGY MANAGEMENT SYSTEM	UH	UNIT HEATER
ESCO	ENERGY SERVICE COMPANY	UV	ULTRAVIOLET
EUH	ELECTRIC UNIT HEATER	UV	UNIT VENTILATOR
EWT	ENTERING WATER TEMPERATURE	VAV	VARIABLE AIR VOLUME
FCL	FAN COIL UNIT	VD	VOLUME DAMPER
FLA	FULL LOAD AMPS	VSD	VARIABLE FREQUENCY DRIVE
FMS	FACILITY MANAGEMENT SYSTEM	VSD	VARIABLE SPEED DRIVE
FPM	FEET PER MINUTE	VSP	VARIABLE SPEED PUMPING(S)
FW	FEED WATER	WB	WET BULB
GPM	GALLONS PER MINUTE	WC	WATER COLUMN
GUI	GRAPHICAL USER INTERFACE	YTD	YEAR TO DATE
HCFC	HYDROCHLOROFLUOROCARBON		
HEPA	HIGH EFFICIENCY PARTICULATE ARRESTING		
HFC	HYDROFLUOROCARBON		
HHWP	HEATING HOT WATER PUMP		
HHWR	HEATING HOT WATER RETURN		
HHWS	HEATING HOT WATER SUPPLY		
HL	HIGH LIMIT		
HR	HEAT RECOVERY		
HRU	HEAT RECOVERY UNIT		
HRV	HEAT RECOVERY VENTILATOR		
HSFP	HEATING SEASONAL PERFORMANCE FACTOR		
HVAC	HEATING VENTILATION AND AIR CONDITIONING		
HWP	HOT WATER PUMP		
HWR	HOT WATER RETURN		
HWS	HOT WATER SUPPLY		
HWRT	HOT WATER RETURN TEMPERATURE		
HWT	HOT WATER SUPPLY TEMPERATURE		
HX	HEAT EXCHANGER		
I/O	INPUT OUTPUT		
IAQ	INDOOR AIR QUALITY		
IR	INFRARED		
LAT	LEAVING AIR TEMPERATURE		
LHV	LOWER HEATING VALUE		

SYMBOLS AND ABBREVIATIONS LEGEND

(THERE MAY BE SYMBOLS LISTED IN THIS LEGEND THAT ARE NOT USED IN THIS SET OF DRAWINGS)

PIPING SYMBOLS	DESCRIPTION
—HHWS—	HEATING HOT WATER SUPPLY PIPING
—HHWR—	HEATING HOT WATER RETURN PIPING
—CHWS—	CHILLER WATER SUPPLY PIPING
—CHWR—	CHILLER WATER RETURN PIPING
—CWS—	CONDENSER WATER SUPPLY PIPING
—CWR—	CONDENSER WATER RETURN PIPING
—GLS—	GEO-THERMAL LOOP SUPPLY PIPING
—GLR—	GEO-THERMAL LOOP RETURN PIPING
—COND—	CONDENSATE DRAIN PIPING
—RSL—	REFRIGERANT SUCTION/LIQUID PIPING
—B—	BALL VALVE
—B—	BUTTERFLY VALVE
—P—	PLUG VALVE
—C—	CIRCUIT BALANCING VALVE
—C—	CHECK VALVE
—PRV-#	PRESSURE REDUCING VALVE
—3-WAY	3-WAY VALVE
—M—	MOTORIZED CONTROL VALVE
—M—	MOTORIZED 3-WAY CONTROL VALVE
—S—	SOLENOID VALVE
—W—	WYE STRAINER
—P—	PIPE CONTINUATION
—P—	POINT OF CONNECTION
—X—	POINT OF REMOVAL
—X—	KEYNOTE NOTE

DUCTWORK SYMBOLS

—	LINEAR DIFFUSER
—	SUPPLY DIFFUSER
—	RETURN GRILLE
—	EXHAUST GRILLE
—	VAV BOX (WITH CLEARANCE BOX SHOWN)
—	BALANCING DAMPER
—	BACKDRAFT DAMPER
—	SMOKE DAMPER
—	FIRE DAMPER
—	MOTORIZED CONTROL DAMPER

—	INTERNALLY LINED DUCTWORK
—	FABRIC DUCTWORK
—	FLEXIBLE DUCTWORK

CONTROL SYMBOLS

—	THERMOSTAT
—	CARBON DIOXIDE SENSOR
—	HUMIDITY SENSOR
—	VOC SENSOR
—	COMBINATION THERMOSTAT / HUMIDITY SENSOR
—	CARBON MONOXIDE SENSOR



1066 North 4th St., Ste. 111
Bellevue, KY 41003
223 Fairfield Ave., Ste. 100
Bellevue, KY 41003
513.390.1112
857.300.1234

WILLIAMSBURG HIGH SCHOOL
MEDIA CENTER RENOVATION
500 SOUTH 5TH STREET, WILLIAMSBURG, OHIO 45176
WILLIAMSBURG LOCAL SCHOOL DISTRICT
549A WEST MAIN STREET, WILLIAMSBURG, OHIO 45176

ISSUANCES

05-19-23 / PERMIT & BID SET

MECHANICAL
SCHEDULES,
LEGENDS,
DETAILS, AND
FLOORPLANS

DATE 5/19/23
COMM NO. 2023044.01

M000

1/4" = 1' REFERENCE LINE

C:\Users\tpoff\Documents\L\1623MEP 2023044.01-Williamsburg_LS-Media Center Reno_1623MEP.rvt

5/17/2023 7:58:11 AM

LIGHTING FIXTURE LEGEND										
LIGHTING FIXTURE TAGS		STANDARD LIGHTING FIXTURE SYMBOLS		EMERGENCY LIGHTING FIXTURES		GENERAL NOTES - LIGHTING FIXTURES				
- CAPITAL LETTER WITH NUMBER DENOTES FIXTURE TYPE - REFER TO LIGHT FIXTURE SCHEDULE BELOW.		<div><div>A10</div><div>1</div></div>	2'x4' RECESSED TROFFER	<div><div>C10</div><div>1</div></div>	LINEAR PENDANT	- GRAY FILLED IN AREA DENOTES EMERGENCY FIXTURE.		<div><div>E10</div><div>E3</div></div>	DUAL HEAD EMERGENCY FIXTURE	A. ALL FIXTURES MARKED 'ED' ARE EXISTING TO BE DEMOLISHED. VERIFY SERVING PANEL AND CIRCUIT NUMBER PRIOR TO DISCONNECTION. REMOVE LIGHTING BRANCH CIRCUITING ABOVE FINISHED CEILING. MAINTAIN HOME RUN CONDUIT FOR CONNECTION TO NEW FIXTURES. B. ALL FIXTURES MARKED 'ER' ARE EXISTING TO REMAIN. FIXTURES SHALL BE CLEANED AND RELAMPED. C. ALL FIXTURES MARKED 'ERL' ARE EXISTING TO BE RELOCATED. FIXTURES SHALL BE CLEANED AND RELAMPED.
- SMALL LETTER DENOTES SWITCH / LEG/RELAY NUMBER - REFER TO E100 SERIES DRAWINGS FOR TYPICAL ROOM LAYOUTS.		<div><div>A20</div><div>1</div></div>	2'x2' RECESSED TROFFER	<div><div>O</div><div>010</div></div>	RECESSED DOWNLIGHT	- CONNECT TO EMERGENCY POWER CIRCUIT AHEAD OF SWITCHING.		<div><div>X10</div><div>1</div></div>	EXIT SIGN - SHADED AREA DENOTES FACE - ARROW DENOTES ARROW DIRECTION - WHEN ON WALL, MOUNT NO HIGHER THAN 6" ABOVE TOP OF NEAREST DOORWAY	
		<div><div>A30</div><div>1</div></div>	1'x4' RECESSED TROFFER	<div><div>O</div><div>010</div><div>1</div></div>	CYLINDRICAL PENDANT	- NL DENOTES NIGHT LIGHT.		<div><div>A10</div><div>NL</div></div>	2'x4' RECESSED TROFFER - NIGHT LIGHT	



EFP100

5/17/2023 7:56:12 AM

0.1" REFERENCE LINE